

## FUSE RANGE

### The Range:

Fuse Bases  
Cover plates  
Fuse Carriers  
Fuse Links

Suitable for Domestic and Industrial installations.

Current ratings from 2A through to 60A for the Pullcap fuse assemblies and 5A to 600A for the type 20 range.

#### **Pullcap Fuse Assemblies**

Current ratings 2 -60 Amperes Pullcap fuse assemblies for industrial and domestic use contain fuse links which are easily replaceable without the use of tools.

Constructed with hardwearing phenolic mouldings, this versatile range features a selection of base cable terminations for varied requirements.

The 30Ampere unit can be supplied with a DIN rail mounting which facilitates multiple fuse assemblies.

Pullcap fuse assemblies contain fuse links to BS1361 and BS88, and are approved by Lloyds.

#### **Type 20 Fuse Links**

Current ratings 5 - 600 Amperes Type 20 fuse links can be replaced without use of tools, and are suitable for existing Type 20 fuse carriers and bases. The range consist of Fuse Bases, Cover plates, Fuse Carriers and Fuse Links suitable for Domestic and Industrial installations.



**Distributor:**

Suparule SA (Pty) Ltd.  
26 Simba St. Unit 1&2  
Sebenza  
Edenvale  
Gauteng  
South Africa  
Tel: +27(0)114529800  
Fax: +27(0)114529828  
e-mail: sales@suparule.co.za  
Web: www.suparule.co.za

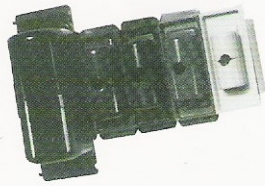
## DESCRIPTION

The range consist of Fuse Bases, Cover plates, Fuse Carriers and Fuse Links suitable for Domestic and Industrial installations.

The current ratings start at 2 amp through to 60amp for the Pullcap fuse assemblies and 5-600amp for the type 20 range.



## PULLCAP FUSE ASSEMBLIES - Current ratings 2 -60 Amperes



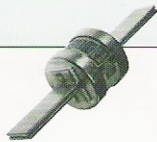
Pullcap fuse assemblies for industrial and domestic use contain fuse links which are easily replaceable without the use of tools.

Constructed with hardwearing phenolic mouldings, this versatile range features a selection of base cable terminations for varied requirements.

The 30Ampere unit can be supplied with a DIN rail mounting which facilitates multiple fuse assemblies.

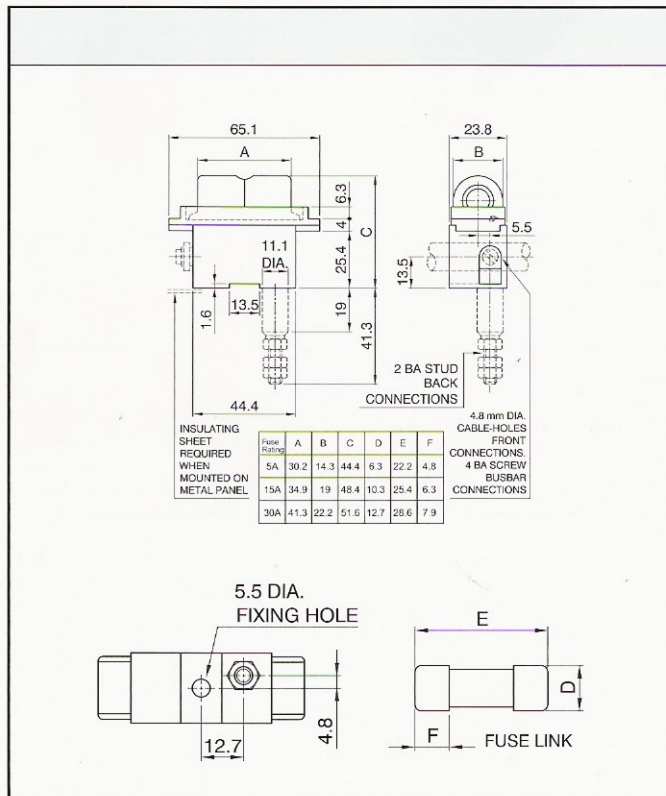
Pullcap fuse assemblies contain fuse links to BS1361 and BS88, and are approved by Lloyds.

## TYPE 20 FUSE LINKS - Current ratings 5 - 600 Amperes

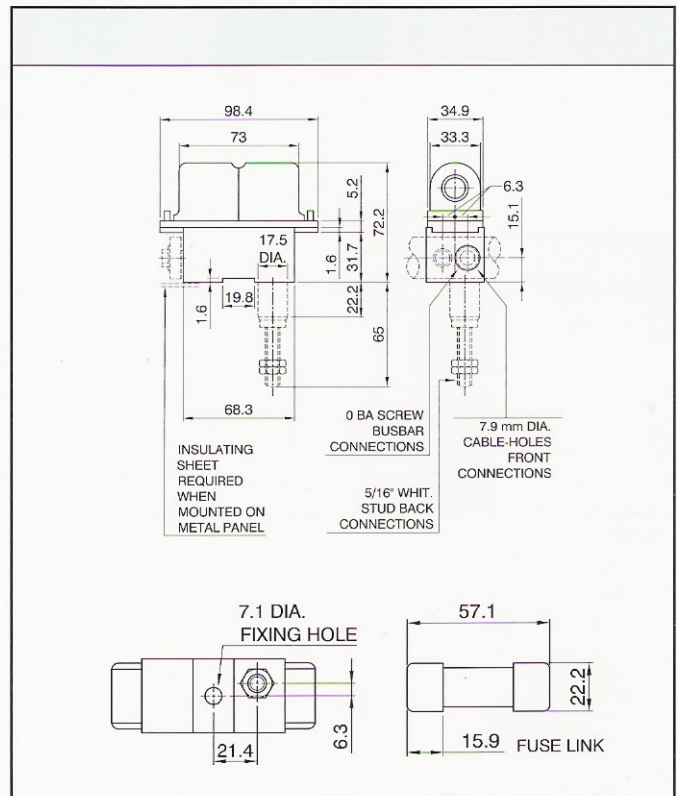


Type 20 Fuse Links can be replaced without use of tools, and are suitable for existing Type 20 Fuse Carriers and Bases. The range consists of Fuse Bases, Cover Plates, Fuse Carriers and Fuse Links suitable for domestic and industrial installations.

## 5, 15 and 30AMP PULLCAP FUSE ASSEMBLIES



## 60AMP PULLCAP FUSE



<b>FUSE LINKS</b>	<b>FUSE BASES - FC/FC</b> Front-connections both ends	<b>COVER PLATES</b>

<b>FUSE CARRIERS</b>	<b>BC/FC</b> One back and one front connection	<b>BC/BC</b> Two back connections

TYPE LA TO FIT CARRIER F194			
	CURRENT RATING	PACK QTY.	CATALOGUE NUMBER
	2A	10	F382
	5A	10	F190*
	Solid link	10	SL-A
	Complying with BS88 1952 (250A C4) and (*) also with BS1361 1947 (250 A C3) class Q1 fusing factor.		

TYPE LD TO FIT CARRIER F196			
	CURRENT RATING	PACK QTY.	CATALOGUE NUMBER
	20A	10	F564
	31A	10	F192*
	Solid link	10	SL-D
	Complying with BS88 1952 (250A C4) and (*) also with BS1361 1947 (250 A C3) class Q1 fusing factor.		

TYPE LC TO FIT CARRIER F195			
	CURRENT RATING	PACK QTY.	CATALOGUE NUMBER
	2A	10	F550
	5A	10	F551
	8A	10	F552
	10A	10	F562
	16A	10	F191*
	20A	10	F937*
	Solid link	10	SL-C
Complying with BS88 1952 (250A C4) and (*) also with BS1361 1947 (250 A C3) class Q1 fusing factor.			

TYPE MD TO FIT CARRIER F271				
	CURRENT RATING	PACK QTY.	CATALOGUE NUMBER	
	2A	10	F313	
	4A	10	F314	
	6A	10	F316	
	8A	10	F317	
	10A	10	F318	
	16A	10	F319	
	20A	10	F320	
	25A	10	F321	
	30A	10	F322	
	Solid link	10	SL-D	
	Asta certified to BS88 1975 for 80kA at 415V a.c. and 40kA at 250V d.c. Class Q1 F.F			

TYPE LE TO FIT CARRIER F197			
	CURRENT RATING	PACK QTY.	CATALOGUE NUMBER
	5A	10	F523
	10A	10	F997
	15A	10	F524
	20A	10	F1000
	30A	10	F525
	40A	10	F998
	50A	10	F1001
	60A	10	F193
	Solid link	10	SL-E
Complying with BS88 1967 category of duty 415 ac 46 class Q1 fusing factor.			

FUSE BASES				
	TERMINAL CONNECTORS		PACK QTY.	CATALOGUE NUMBER
	FC/FC	Front-connections both ends	10	F246
	FCL/FCL	Front-connections both ends- DIN rail mounting	10	F246D
	FC/BBC	Looping front-connections both ends	10	F456
	BC/FC	One front & one busbar connection	10	F247
	BC/BC	One back & one front connection	10	F274
	BC/BC	Two back connections	10	F276
	FC/FC	Front-connections both ends	10	F198
	FCL/FCL	Looping front-connections both ends	10	F438
	C/BBC	One front & one busbar connection	10	F261
	BC/FC	One back & one front connection	10	F262
	BC/BC	Two back connections	10	F264



## COVER PLATES

	CURRENT RATING		COLOUR	PACK QTY.	CATALOGUE NUMBER
	30A	5A			
	30A	5A		10	F209
		15A		10	F266
		15A		10	F210
				10	F377
		30A		10	F211
	60A		blank plate	10	F268
	60A			10	F475
					F214

## FUSE CARRIERS

	CURRENT RATING		COLOUR	PACK QTY.	CATALOGUE NUMBER
	30A	5A			
	30A	5A		10	F194
		15A		10	F269
		15A		10	F195
				10	F376
		30A		10	F196
	60A		10	F271	
	60A			10	F197

### Type 20 Cartridge Fuse Links

In order to give continuity of service to traditional users of Type 20 Fuse Assemblies, we have introduced a range of replacement fuse links (listed below). Overall dimensions are maintained to fit Type 20 carriers, but the barrels are shorter in length. Type 20 links are directly replaced by Pullcap type LE links.

OBSOLETE CATALOGUE NO.	REPLACEMENT CATALOGUE NO.
GPE - 20E - 5A	F 523*
GPE - 20E - 10A	F 997*
GPE - 20E - 15A	F 524*
GPE - 20E - 20A	F 1000*
GPE - 20E - 25A	-
GPE - 20E - 30A	F 525*
GPE - 20E - 40A	F 998*
GPE - 20E - 50A	F 1001*
GPE - 20E - 60A	F 193*
GPE - 20F - 15A	RGPF - 20F - 16A
GPE - 20F - 30A	RGPF - 20F - 32A
GPE - 20F - 40A	RGPF - 20F - 40A
GPE - 20F - 50A	RGPF - 20F - 50A
GPE - 20F - 60A	RGPF - 20F - 63A
GPF - 20F - 80A	RGPF - 20F - 80A
GPF - 20F - 100A	RGPF - 20F - 100A

OBSOLETE CATALOGUE NO.	REPLACEMENT CATALOGUE NO.
GPG - 20G - 125A	RGPG - 20G - 125A
GPG - 20G - 150A	RGPG - 20G - 160A
GPG - 20G - 200A	RGPG - 20G - 200A
GPG - 20H - 125A	RGPH - 20H - 125A
GPG - 20H - 150A	RGPH - 20H - 160A
GPG - 20H - 200A	RGPH - 20H - 200A
GPH - 20H - 250A	RGPH - 20H - 250A
GPH - 20H - 300A	RGPH - 20H - 315A
GPH - 20H - 350A	RGPH - 20H - 355A
GPH - 20H - 400A	RGPH - 20H - 400A
GPH - 20J - 250A	RGPJ - 20J - 250A
GPH - 20J - 300A	RGPJ - 20J - 300A
GPH - 20J - 350A	RGPJ - 20J - 355A
GPH - 20J - 400A	RGPJ - 20J - 400A
GPJ - 20J - 500A	RGPJ - 20J - 500A
GPJ - 20J - 600A	RGPJ - 20J - 630A

\* to fit carrier catalogue no. F197